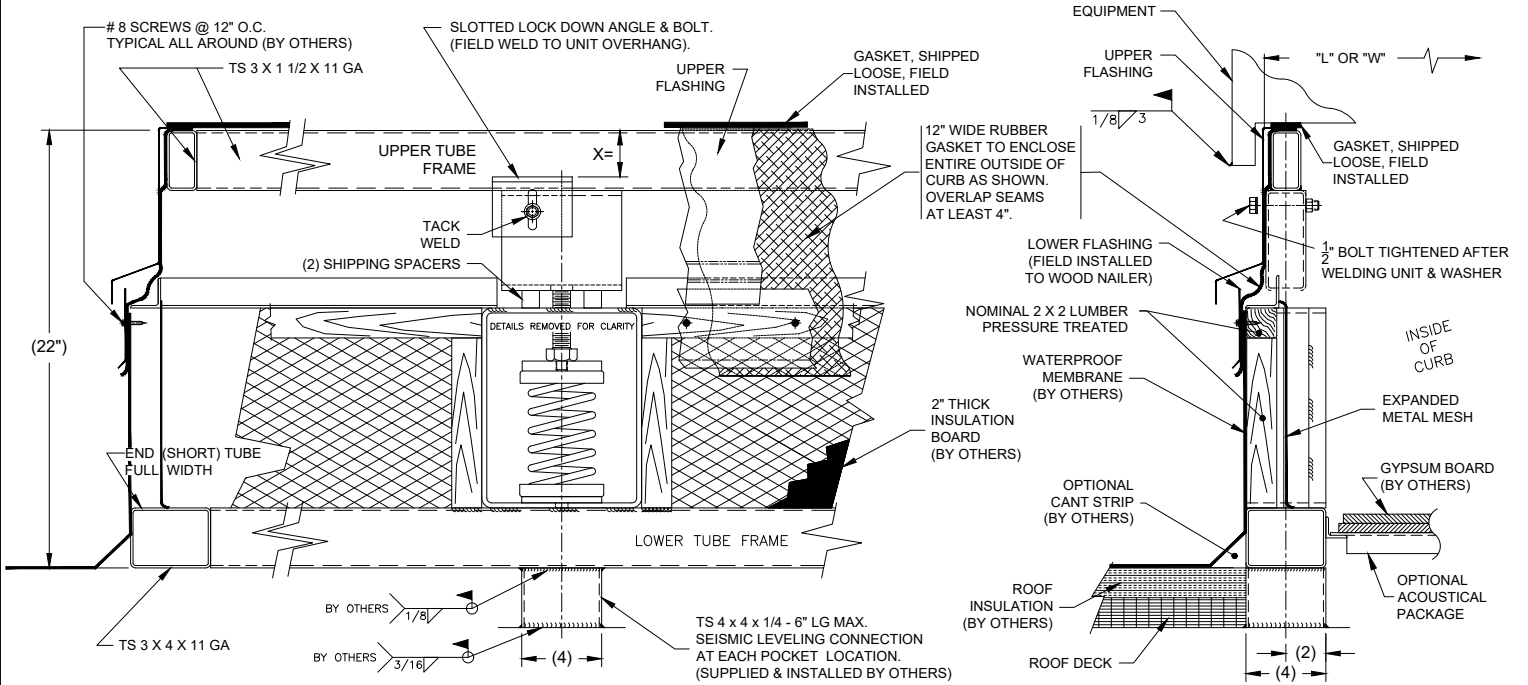


REV.	DESCRIPTION	DATE	BY
A	INITIAL RELEASE		

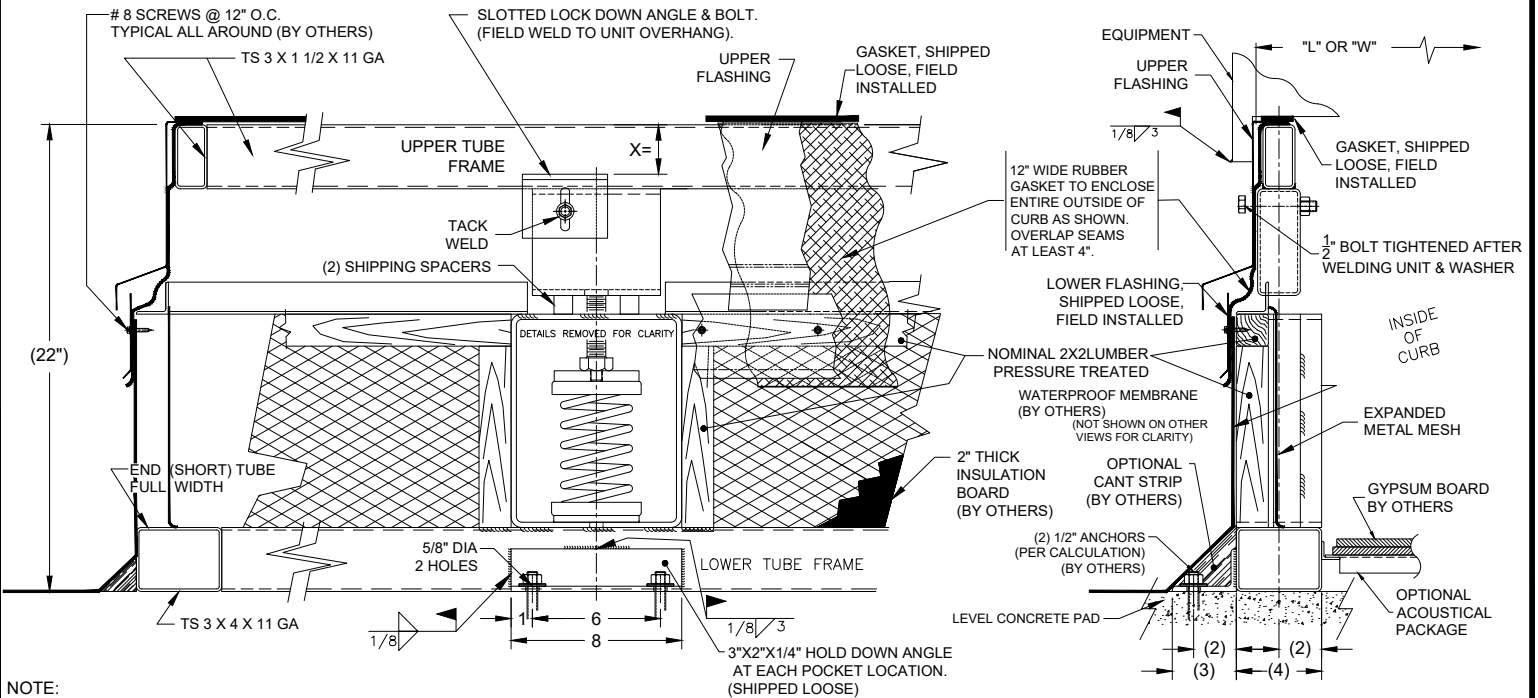
NOTE: PLEASE CONFIRM AND/OR SELECT MOUNTING CONDITIONS OF CURB:  
ATTACHED TO STEEL OR CONCRETE AT ROOF (DEFAULT TO STEEL).

STEEL ATTACHMENT



NOTE: DIMENSION "X" MUST BE SUPPLIED PRIOR TO FABRICATION

CONCRETE ATTACHMENT

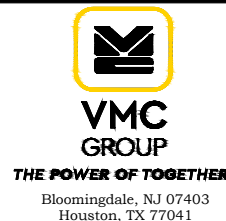


- NOTE:
- DIMENSION "X" MUST BE SUPPLIED PRIOR TO FABRICATION
  - GROUT AS REQ'D. (SUPPLIED & INSTALLED BY OTHERS) 1/4" MAX. DIFFERENCE CAN BE TOLERATED.



**CERTIFIED FOR:**  
 JOB NAME:  
 CUSTOMER:  
 CUSTOMER P.O.:  
 SALES ORDER:

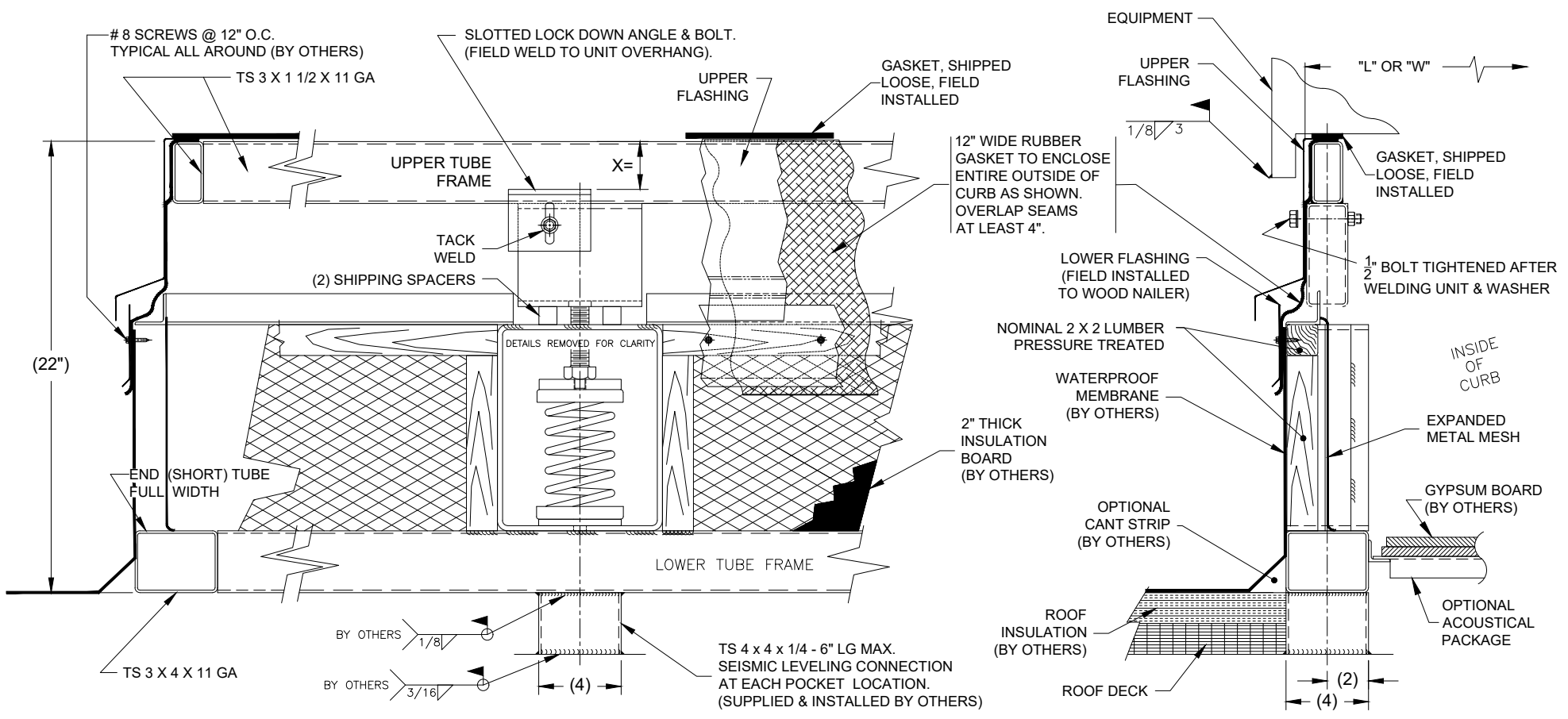
**MODEL P6300 ISOLATED  
SEISMIC/WIND RESTRAINT  
ROOF CURB  
DETAILS & SECTIONS**



SCALE: NONE  
 SHEET: 1 OF 3  
 DRAWING NO.:  
 REVISION:






REV.	DESCRIPTION	DATE	BY
A	INITIAL RELEASE NO.		

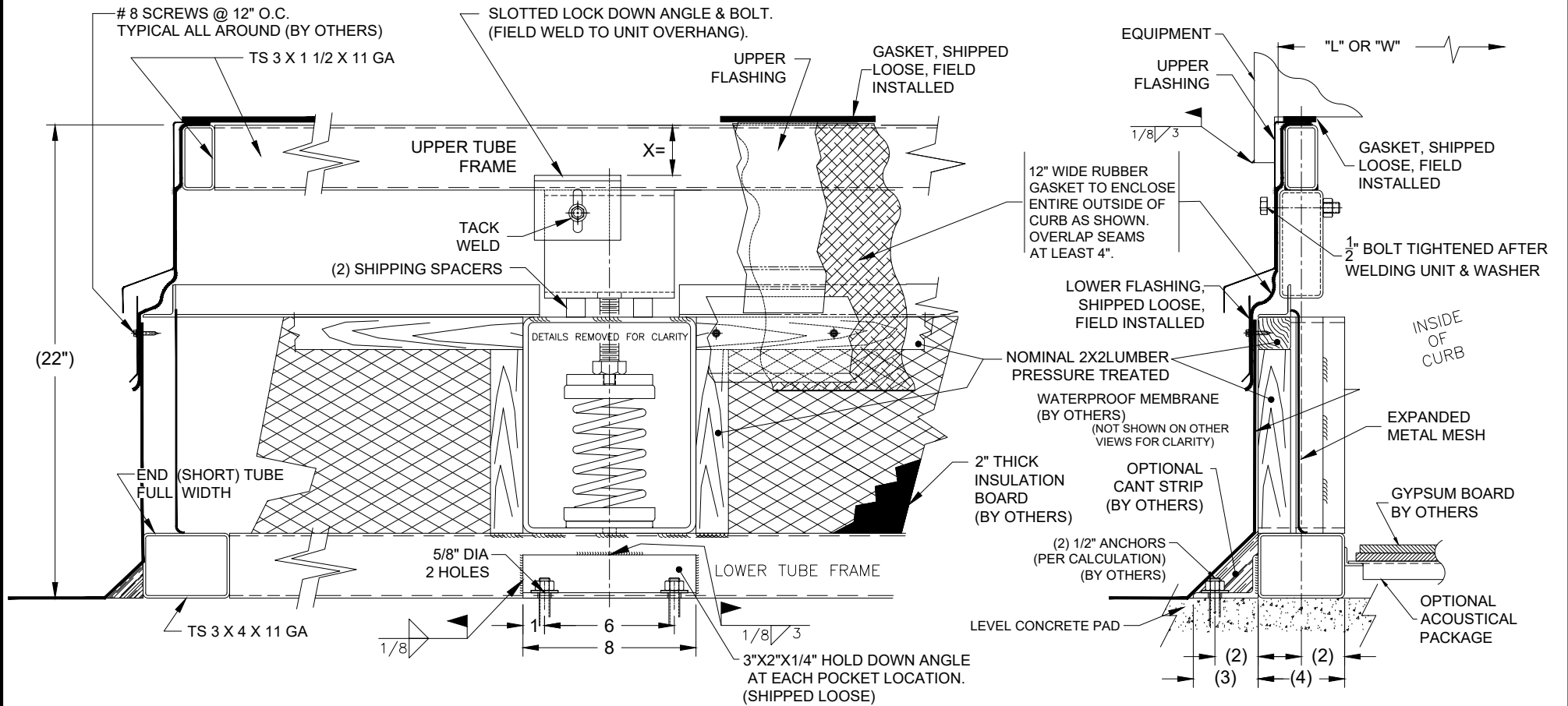


NOTE: DIMENSION "X" MUST BE SUPPLIED PRIOR TO FABRICATION

OTHER MATERIALS, COMPOUNDS, OR FINISHES WITH EQUAL OR SUPERIOR PROPERTIES MAY BE SUBSTITUTED AS THEY BECOME AVAILABLE.

	<b>CERTIFIED FOR:</b> JOB NAME: _____ CUSTOMER: _____ CUSTOMER P.O.: _____ SALES ORDER: _____	<b>MODEL P6300 ISO SEISMIC/WIND RESTRAINT ROOF CURB STEEL ATTACHMENT</b>	 <b>VMC GROUP</b> THE POWER OF TOGETHER Bloomingdale, NJ 07403 Houston, TX 77041	SCALE: NONE			
				SHEET: 2 OF 3		DRAWING NO.: _____	REVISION

REV.	DESCRIPTION	DATE	BY
A	INITIAL RELEASE NO.		



NOTE: DIMENSION "X" MUST BE SUPPLIED PRIOR TO FABRICATION

OTHER MATERIALS, COMPOUNDS, OR FINISHES WITH EQUAL OR SUPERIOR PROPERTIES MAY BE SUBSTITUTED AS THEY BECOME AVAILABLE.

**CERTIFIED FOR: CERT**

JOB NAME: \_\_\_\_\_

CUSTOMER: \_\_\_\_\_

CUSTOMER P.O.: \_\_\_\_\_

SALES ORDER: \_\_\_\_\_

**MODEL P6300 ISO SEISMIC/WIND RESTRAINT ROOF CURB CONCRETE ATTACHMENT**



SCALE:	NONE	
SHEET:	3 OF 3	
DRAWING NO.:		REVISION